



Allan Morris
estate agents

Hallow Road, Worcester

Beaconhill House, Hallow Road, Worcester. WR2 6DJ

Features

- SPACIOUS 6 BEDROOM FAMILY HOME
- APPROXIMATELY 3800 SQ FEET
- OPEN PLAN SITTING ROOM/DINING AREA
- SOUGHT AFTER LOCATION NEAR HALLOW
- LOCAL & PRIVATE SCHOOLING CLOSE BY
- MATURE GARDEN, DOUBLE GARAGE & PARKING
- SECURE GATED ENTRY

'Beaconhill' House is set within this sought after area within easy reach of the popular village of Hallow, together with extensive amenities and major transport links. This wonderful, spacious and flexible six bedroom detached family home offers well planned and finished accommodation, together with an extensive raised patio ideal for entertaining and a mature rear garden, all accessed via a secure gated entry.

Accommodation comprising: Large welcoming Entrance Hall, Study/Office, open plan Living Room/Dining Area with two sets of double opening doors onto balcony, further 2nd Reception/Family Room, Kitchen/Breakfast Room, Utility and Laundry Room, access to double garaging, two downstairs Cloakrooms. To the first floor: Master Bedroom Suite with built in wardrobes and large En-Suite Bathroom, guest Bedroom with further En-Suite Bathroom, four further large Bedrooms and a Family Bathroom with separate shower.

Outside: The property is approached by way of secure gated entry onto a large block paved driveway suitable for numerous vehicles, leading to double garaging. To the rear of the property 'Beaconhill House' has an extensive raised balcony ideal for entertaining, mature lawned garden with further hard standing and pergola offering privacy for hot tub, etc.





Directions:

From Worcester City centre proceed over the River bridge and onto the New Road. Bear right round Cripplegate Park and turn right at the first roundabout onto Tybridge Street, stay in the left hand lane and turn left onto the Hylton Road. Proceed for approximately one mile onto Hallow Road, where the property can be found on the right hand side.

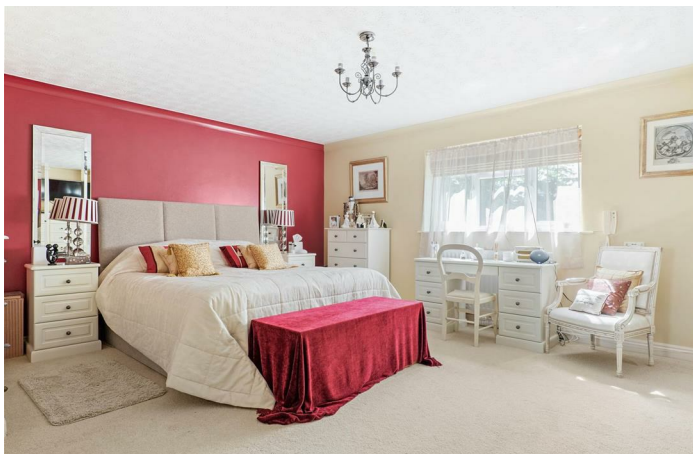
WAM 6731

Useful Information:

Tenure: Freehold

EPC rating: B

Council Tax Band: G





Total area: approx. 355.3 sq. metres (3824.8 sq. feet)

DISCLAIMER - Floor plans shown are for general guidance only. Whilst every attempt has been made to ensure that the floorplan measurements are as accurate as possible, they are for illustrative purposes only.

Floorplan Measurements:

ENTRANCE HALL:

13'9" x 13'3"

STUDY:

13'3" x 13'0"

LIVING ROOM/DINING AREA:

26'2" x 22'6"

RECEPTION 2/FAMILY SPACE:

18'10" x 13'7"

KITCHEN/BREAKFAST ROOM:

18'10" x 13'4"

UTILITY:

8'0" x 7'2"

GARAGE:

20'3" x 19'9"

MASTER BEDROOM:

17'11" x 14'7"

DRESSING AREA/WARDROBES:

7'11" x 3'2"

EN-SUITE BATHROOM:

10'2" x 7'10"

GUEST BEDROOM 2:

12'8" to wardrobes x 9'10"

GUEST EN-SUITE:

9'9" x 7'4"

BEDROOM 3:

14'3" x 13'5"

BEDROOM 4:

13'2" x 11'8"

BEDROOM 5:

13'7" x 13'1"

BEDROOM 6/PLAYROOM:

19'6" x 17'11"

FAMILY BATHROOM:

10'1" x 9'4"

Contact us:

Address:

32 Sidbury, Worcester, WR1 2HZ

General Information:

Whilst we endeavour to make our sales particulars fair, accurate and reliable, they are only a general guide to the property. Accordingly, if there is any point which is of particular importance to you please contact the office and we will be pleased to check the position for you, especially if you are travelling some distance to view the property. **MEASUREMENTS:** Our quoted room sizes are approximate and intended for general guidance, you are particularly advised to verify all the dimensions carefully. **FIXTURES AND FITTINGS:** All items not specifically mentioned within these details are to be excluded from the sale. **SERVICES:** Any mention of services/appliances within these details does not imply they are in full and efficient working order. We have not tested these, or any equipment in the property. Allan Morris Worcestershire will not be liable, in negligence or otherwise, for any loss arising from the use of these particulars.

tel: 01905 612266

worcester@allanmorris-worcester.co.uk

www.allan-morris.co.uk